

TLH High-Profile Tilt Legs

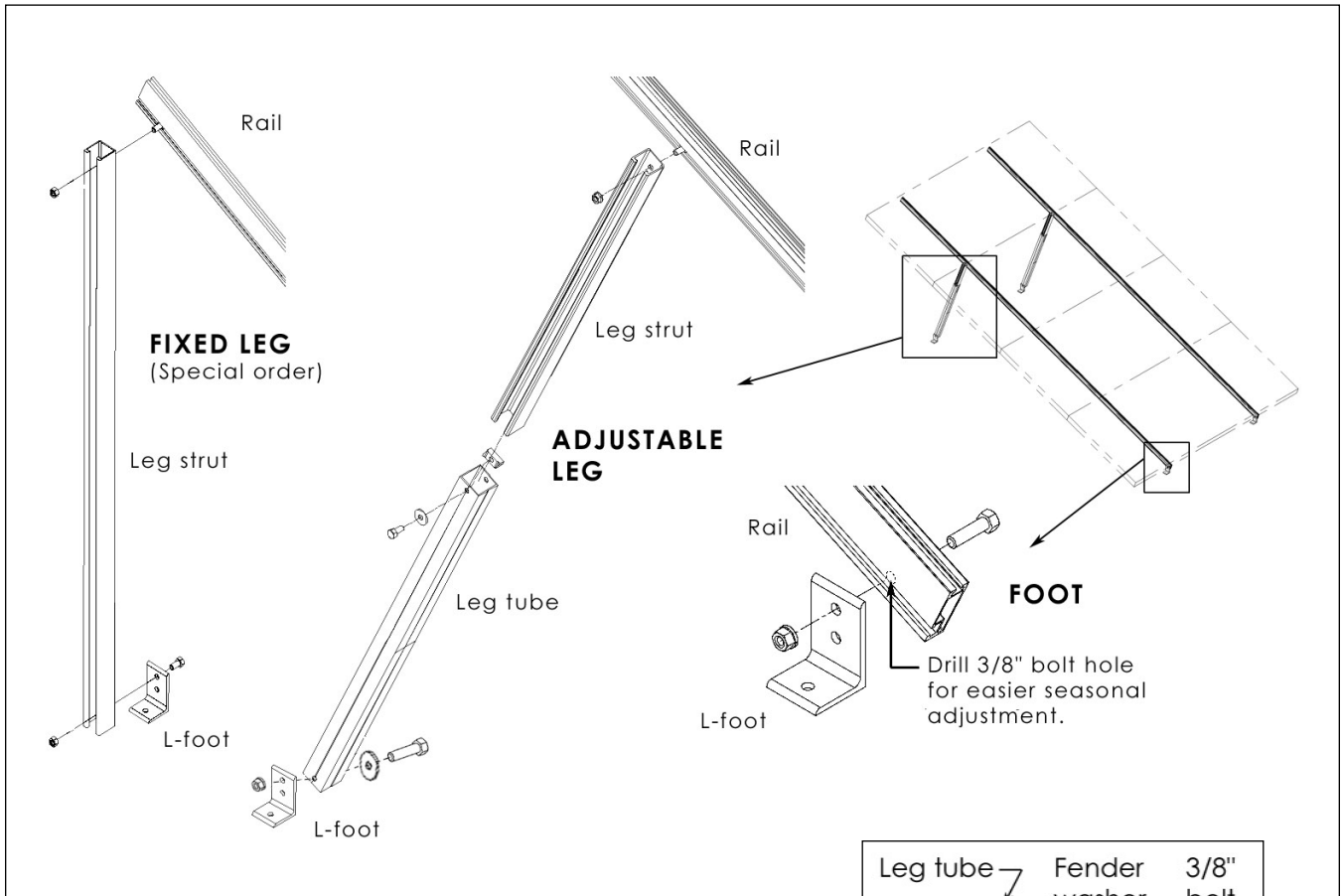


Figure 1. Leg and Foot Assembly: Illustrated parts are from your leg kit and your SMR rail set. Leg kit parts are listed in the parts inventory below.

Adjustable leg parts list (per leg)

Part	Qty.	Wrench size	Recommended torque (ft-lbs)
Leg tube	1		
Leg strut	1		
Bolt, 3/8 x 1 1/4"	2	9/16"	30
Bolt, 3/8 x 2 1/2"	1	9/16"	30
Fender washer, 3/8"	2		
Flange nut, 3/8"	2		
Strut nut, 3/8"	1		

Fixed leg parts list (per leg)

Part	Qty.	Wrench size	Recommended torque (ft-lbs)
Leg strut	1		
Bolt, 3/8 x 1 1/4"	1	9/16"	30
Flange nut, 3/8"	1		

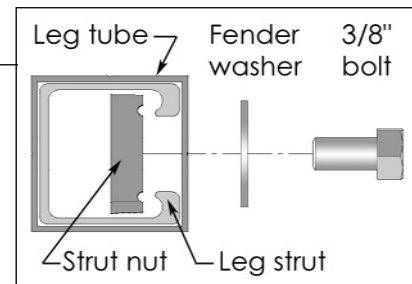


Figure 2. Adjustable Leg Cross Section

Thank you for purchasing a UniRac. Please cover these illustrations thoroughly before proceeding.

The installer is solely responsible for complying with applicable building codes and for all aspects of electrical installation of the PV array.

Use the parts list to verify that all parts are present. Note that Figures 1 and 3 illustrate parts from both your leg kit and your SMR rail set.

Caution: Stainless steel hardware can seize up, a process called galling. To significantly reduce the likelihood of galling, SAF-T-EZE anti-seize lubricant has been included with your hardware. Apply a very small drop to the threads of all bolts before installation.

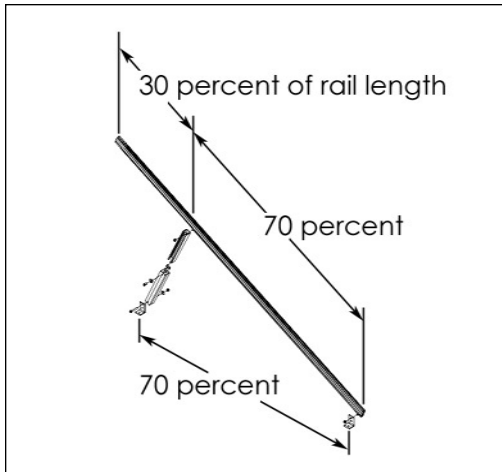


Figure 3. Leg spacing with SolarMount SMR48 to 106 rail sets (one leg per rail).

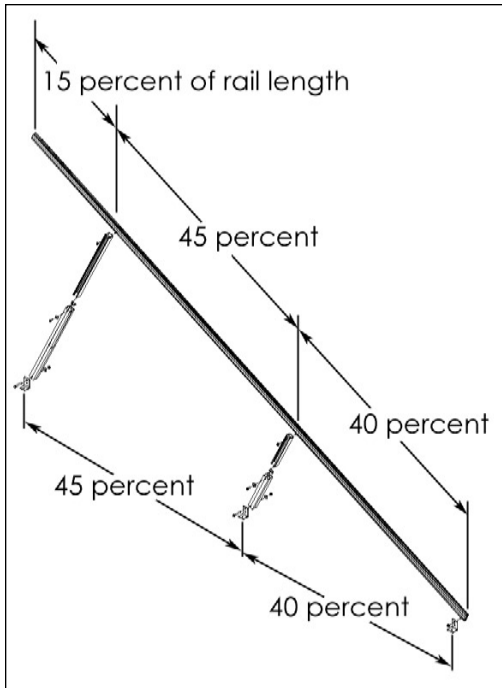


Figure 4. Leg spacing with SolarMount SMR120 to 132 rail sets (two legs per rail).

Pub 030811-1ii
 ©2003 by UniRac, Inc.
 All rights reserved.

Spacing of Footing Bolts and L-Feet for Each Rail (inches)

Use this table in conjunction with Figure 3 or Figure 4 to determine footing bolt and L-foot spacing for your SMR Rail Set.

	<i>Rail Length</i>	<i>70% Rail Length</i>
SMR48	48	34
SMR60	60	42
SMR72	72	50
SMR84	84	59
SMR96	96	67
SMR106	106	74

	<i>Rail Length</i>	<i>40% Rail Length</i>	<i>45% Rail Length</i>
SMR120	120	48	54
SMR132	132	53	59
SMR144	144	58	65
SMR156	156	62	70
SMR168	168	67	76
SMR180	180	72	81

10 Year Limited Warranty

UniRac, Inc., warrants to the original owner at the original installation site that the TLH tilt legs (the "Product") shall be free from defects in material and workmanship for a period of ten (10) years from the earlier of 1) the date the installation is complete, or 2) 30 days after the purchase of the Product by the original owner. This warranty does not cover damage to the Product that occurs during shipment, or prior to installation.

If within such period the Product shall be reasonably proven to be defective, then UniRac shall repair or replace the defective Product, or part thereof, at UniRac's sole option. Such repair or replacement shall fulfill all UniRac's liability with respect to this warranty.

This warranty shall be void if installation of the Product is not performed in accordance with UniRac's Assembly Instructions for the Product, or if the Product has been modified, repaired, or reworked in a manner not authorized by UniRac in writing, or if the Product is installed in an environment for which it was not designed. UniRac shall not be liable for consequential, contingent, or incidental damages arising out of the use of the Product.